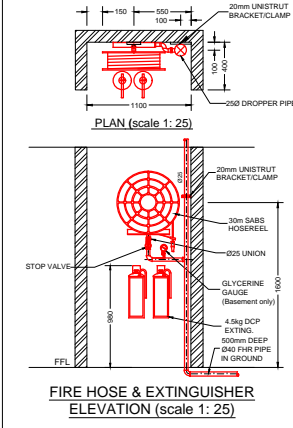
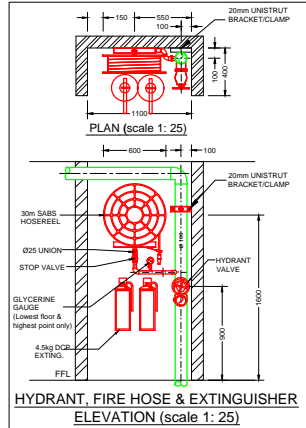
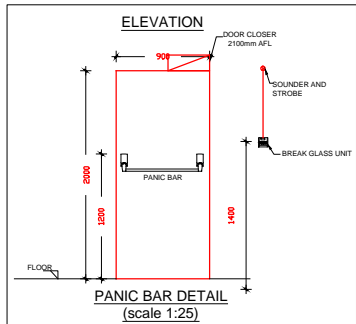


FIRE EQUIPMENT COUNT		
ITEM	DESCRIPTION	QTY
1	FIRE HYDRANT	2
2	FIRE HOSE REEL	5
3	FIRE EXTINGUISHER	14
3.1	CO2	3
3.2	DCP	11

CLOUDED INDICATES
EXISTING EQUIPMENT

FIRE SIGNS & EQUIPMENT COUNT (EXISTING)									
SYMBOL	E1	E2	E3	E16	E17	F13	F4	F5	F6
QUANTITY	9	10	5	2	2	2	1	5	5

FIRE SIGNS & EQUIPMENT COUNT (NEW)									
SYMBOL	E1	E2	E3	F13	F4	F5	F6	F1	F2
QUANTITY	3	2	3	2	3	2	2	1	4



FIRE INSTALLATION NOTES

PORTABLE FIRE EXTINGUISHERS
FIRE EXTINGUISHERS SHALL BE 4.5kg DRY CHEMICAL POWDER TYPE AND 3kg CO₂ TYPE AND SHALL COMPLY WITH SANS 631.
ALL FIRE EXTINGUISHERS SHALL BE MOUNTED ON WOODEN BACKING BOARDS.

FIRE HOSE REELS
FIRE HOSE REELS SHALL CONFORM TO SANS 543.
ALL FIRE HOSE REELS SHALL BE COMPLETE WITH 30 METERS OF HOSE AND SHALL HAVE A MINIMUM FLOW RATE OF 0.5 l/s AT 300 kPa.

FIRE HYDRANTS
FIRE HYDRANTS SHALL COMPLY WITH SANS 543 AND HAVE A MINIMUM FLOW RATE OF 20 l/s AT 300 kPa.

PIPING
NO PIPEWORK TO BE EMBEDDED IN SCREENED OR CONCRETE FLOORS.
ALL PIPEWORK SHALL CONFORM TO SANS 62 (STEEL, MEDIUM).
THE DISTANCE BETWEEN PIPE SUPPORT BRACKETS FOR THE HORIZONTAL AND VERTICAL PIPEWORK, SHALL NOT EXCEED THE FOLLOWING:
NOMINAL DIAMETER: 40mm, 65mm, 100mm, 150mm, 200mm, 250mm, 300mm, 350mm, 400mm, 450mm, 500mm, 550mm, 600mm, 650mm, 700mm, 750mm, 800mm, 850mm, 900mm, 950mm, 1000mm.
MAXIMUM SPACING: 4m, 6m, 8m, 10m, 12m, 14m, 16m, 18m, 20m, 22m, 24m, 26m, 28m, 30m, 32m, 34m, 36m, 38m, 40m, 42m, 44m, 46m, 48m, 50m, 52m, 54m, 56m, 58m, 60m, 62m, 64m, 66m, 68m, 70m, 72m, 74m, 76m, 78m, 80m, 82m, 84m, 86m, 88m, 90m, 92m, 94m, 96m, 98m, 100m.

PIPING
PIPING SHALL BE PROPERLY CLEANED OFF SITE, FROM RUST & LOOSE MILL SCALE WITH A HARD WIRE, & DECREASED PRIOR TO APPLICATION OF A RED OXIDE PRIMER & SHALL COMPLY WITH SANS 1203.
BE 2 OFF SIGNAL RED, HIGH GLOSS ENAMEL TO SANS 631.
ALL SCAFFOLDING SHALL BE GALVANIZED.
SEALING OF JOINTS WILL BE WITH HEAVY STODGE OR PTFE TAPE.
HYDRAULIC PRESSURE TESTING SHALL BE DONE TO 15 BAR FOR A PERIOD OF 24 HOURS.

SYMBOLIC SAFETY SIGNAGE
SYMBOLIC SAFETY SIGNAGE SHALL COMPLY WITH SANS 1186 PART V.
SIGNAGE SHALL BE INSTALLED SUCH AS TO CLEARLY INDICATE THE POSITIONS OF ALL FIRE EQUIPMENT AND ESCAPE ROUTES.
EACH FLOOR LEVEL SHALL BE NUMBERED IN THE ESCAPE STAIRS.
SIGNAGE ON DRAWINGS IS AN INDICATION OF SIGNAGE REQUIRED.
FINAL SIGNAGE TO BE DETERMINED ON SITE.
ADDITIONAL SIGNAGE TO BE ADDED SHOULD IT BE REQUESTED BY THE LOCAL AUTHORITIES.
FINAL FIRE SIGNAGE TO BE DETERMINED ON SITE WITH THE COUNCIL'S FIRE OFFICER.

FIRE DOORS
FIRE DOORS OF THE RATING AND WIDTH AS INDICATED ON THE DRAWINGS, SHALL BE INSTALLED AND SHALL COMPLY WITH SANS 1203.
ALL FIRE DOORS TO BE FITTED WITH SELF CLOSING MECHANISMS.

FIRE ALARM / DETECTION
FIRE DETECTION AND ALARM SYSTEM SHALL BE INSTALLED AS INDICATED ON THE DRAWINGS AND IN ACCORDANCE WITH SANS 10139.

ESCAPE DOORS
ALL ESCAPE DOORS SHALL BE COMPLETE WITH FIRE ESCAPE BRONZING.

FIRE ESCAPE ROUTES
FIRE ESCAPE ROUTES, INCLUDING CORRIDORS AND STAIRWAYS SHALL HAVE MINIMUM WIDTH OF 1000mm UNLESS SHOWN OTHERWISE.
ALL ESCAPE ROUTES SHALL HAVE A FIRE RESISTANCE AS INDICATED.
ALL EMERGENCY ROUTES SHALL HAVE A FIRE RESISTANCE AS INDICATED ON THE DRAWINGS.

FIRE SERVICES DESIGN SUMMARY SCHEDULE			
1 OCCUPANCY INFORMATION			
1.1 FLOOR AREA:	2234	m ²	OCCUPIED
1.2 OCCUPANCY CLASS:	G1		OFFICE
1.3 POPULATION:	1/ SEAT	444	NUMBER OF PEOPLE
1.4 ROUTES OF ESCAPE required:	2-OFF EXISTING 1400mm WIDE STAIRCASES		
2 FIRE PROTECTION EQUIPMENT			
2.1 FIRE HYDRANT:	1/ 1000	m ² = 2	REQUIRED, 90 METERS APART
2.2 FIRE HOSE REEL:	1/ 500	m ² = 4	REQUIRED, WITH 30 METER LONG HOSES
2.3 EXTINGUISHERS:	1/ 200	m ² = 11	REQUIRED, 4.5 KG DCP TYPE (14-OFF INSTALLED, 11-OFF EXISTING DCP & 3-OFF CO2 EXISTING)
2.4 SPRINKLER PROTECTIONS:	NO	NOT REQUIRED	
3 RELATED SERVICES			
3.1 FIRE DETECTION:	YES	THROUGHOUT THE BUILDING IN ACCORDANCE WITH SANS 10139:2021 (Category L1)	
3.2 SMOKE VENTILATION:	YES	REQUIRED, AREA GREATER THAN 500m ²	

- SCOPE OF WORKS CLARIFICATION**
- FIRE CONTRACTOR
1. SERVICE AND RE-USE EXISTING FIRE EXTINGUISHERS AND 5-OFF FIRE HOSE REELS.
2. SUPPLY & INSTALL NEW FIRE FIGHTING EQUIPMENT AS INDICATED ON PLAN.
3. SUPPLY & INSTALL NEW FIRE SIGNAGE AS INDICATED ON PLAN.
4. NEW EVACUATION PLANS & PROCEDURES.
 - ELECTRICAL CONTRACTOR
1. SUPPLY AND INSTALL EMERGENCY LIGHTING THROUGHOUT THE SPACE AS SHOWN ON PLAN, c/w BATTERY BACKUP.
 - BUILDER
1. SUPPLY AND INSTALL PANIC BARS c/w WHITE ON GREEN "PUSH BAR TO OPEN" SIGN.
2. PROVIDING PENETRATIONS THROUGH CEILINGS AND WALLS AND MAKING GOOD THEREOF.
3. FIXING OF EXTINGUISHER BACKING BOARDS TO WALLS SUPPLIED BY FIRE CONTRACTOR.
4. SUPPLY & INSTALL NEW FIRE DOORS c/w 25mm STEEL FRAME AND DOOR CLOSER.
5. FIRE SEALING OF PENETRATIONS THROUGH FIRE WALLS.

FIRE SERVICES LEGEND	
	BREAK GLASS UNIT
	FIRE HYDRANT
	4.5kg DCP FIRE EXTINGUISHER
	DIRECTIONAL ARROW
	FIRE ESCAPE
	60MIN FIRE RATED LIFT LANDING DOOR
	60 MINUTE FIRE RATED WALL

FIRE DESIGN CONFIRMATION	
DEEMED TO SATISFY WITH SANS 10400	N/A
RATIONAL ASSESSMENT	YES
RATIONAL DESIGN EQUIVALENT OR SUPERIOR TO SANS 10400	N/A

DATE: 2022-07-06
FOR INFORMATION
FOR APPROVAL
X FOR TENDER
FOR CONSTRUCTION
AS-BUILT

REVISIONS			
No.	Date	Description	Rev. By/Chk. By
A	2022/07/06	ISSUED FOR INFORMATION	AJD / HJR
B	2022/07/06	DRAWING UPDATED TO REFLECT NEW ARCHITECTURAL LAYOUT	LK / HJR
C	2022/07/06	ISSUED FOR TENDER	LK / HJR

09 Plantam Street
Kallitriver
7580

CONSULTMECH
Mechanical Engineers

Cell: 0872 908 5470
Tel: 021 901 4877
Email: info@consultmech.co.za

PROJECT: LAHAE LA SANS - BLOCK GH

DWG TITLE: FIRST STOREY - PROPOSED
FIRE SERVICES LAYOUT

DWG NUMBER: 21B09-F-510-01 REV: C

DESIGNED BY: A. DAVIDS SCALE: 1:100 B A0

CHECKED BY: H.D. ROUX ECSA NUMBER: 201070151

APPROVED BY: H.D. ROUX ECSA NUMBER: 201070151

COPYRIGHT AND RIGHT OF REPRODUCTION OF THIS DRAWING OR ANY PORTION THEREOF IS RESERVED BY THE ENGINEER.

FIRST STOREY - PROPOSED FIRE SERVICES LAYOUT (Scale 1:100)